

English

Over this half term, we will be continuing to focus on improving our writing and building on the length of our writing. We will develop our writing structure using paragraphs and the concept of chronological order, as well as writing techniques including imperative verbs and time adverbials. We will be using these skills, along with other writing techniques to produce an instructional text and a letter inspired by our class readers for the term. We have Guided Reading 3 times a week, as well as regular spelling and handwriting practice.

Maths

In maths, we will be learning about shape, multiplication and division, and time. In lessons, we will deepen our understanding of problem solving. We will also be practising our mental maths skills and times tables.

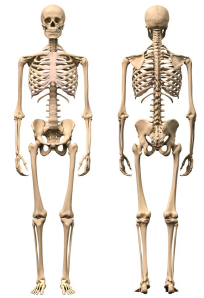
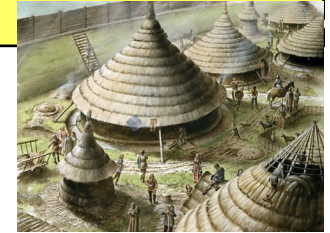
Art / DT

In Art, we will be learning about cave art and comparing the artwork of different artists.

In DT, we will be doing textiles and will learn and develop the skills needed to create a pair of trousers.

History

This term's topic in History is 'Stone Age to Iron Age'. In this we will look at life during these periods of time, the importance of trade and settlements, whilst exploring historical sources to aid our learning.



Music

We will be learning about different instruments through the theme of 'Musical Storytelling'.

Class 2
Mrs Morgan-Lewis,
Mrs Beasley, Miss Molloy and
Mrs Badger

PE

We will be taught PE by Liam on Wednesday afternoons where the focus is on invasion games. On a Thursday we will be doing gymnastics with Mrs Morgan-Lewis.

MFL



In French we will be continuing to study the topic 'Our School'. This includes items in the classroom, subjects and what do you like doing at school.

Computing

We use Purple Mash for our Computing curriculum. This half term we are learning all about spreadsheets. We use the iPads in our Computing sessions.

purple
mash

Science

Our new topic in Science is 'Animals including Humans'. We will be exploring the role of skeletons and muscles, learning how the body uses energy and what constitutes a balanced diet. We will also be designing and conducting experiments and investigations, observing over time, and collecting and displaying data.

PSHE

We will be looking at 'What are families like?' in PSHE with Miss Molloy. There will be lots of discussions and thinking about the make-up of a family, what makes a good family and how all families are different.

PE kits need to be worn
to school on Wednesdays
and Thursdays.

RE

The question we will look at in our RE lessons is 'Who is Jewish and how do they live?'. We will recognise the words of the Shema as a Jewish prayer and retell some stories used in Jewish celebrations.